



# DEVIL'S IVY

SYMBOL OF FORTUNE PROLIFERATING

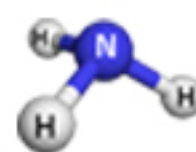
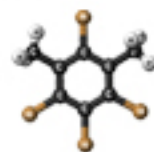
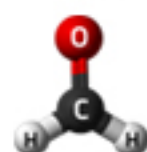


## SYMBOL OF FORTUNE PROLIFERATING

MSP: C0004



Vietnamese name	Trầu bà
English name	Devil's Ivy
Science name	Epipremnum aureum
Mature size	90 - 300 cm
Filtration of harmful substances	Formaldehyde, Xylene, Amoniac



The devil's ivy is not only a beautiful decorative plant, with its fresh green color, but it also has an excellent air-purifying effect. It has the ability to absorb various toxins and pollutants from sources such as cigarette smoke, radiation from electronic devices like phones, Wi-Fi routers, computers, and microwaves. In a 10m<sup>2</sup> room, planting 1-2 Areca palm trees can effectively purify the air.

The devil's ivy has a strong growth characteristic, rapidly growing with always healthy leaves, symbolizing prosperity, flourishing wealth, and smooth paths for offspring. It is easy to cultivate and care for, representing success and favorable outcomes in all endeavors. The devil's ivy brings prosperity to the homeowner.

This plant is especially suitable for individuals with the Wood and Water elements. Water nurtures Wood, and Wood is harmonious with Wood. Therefore, those who belong to these two elements will experience enhanced auspicious energies when planting the devil's ivy. Particularly, the aquatic version of the devil's ivy is especially favorable for those with the Water element.



Origin  
Mexico



Genus  
Monstera



Search Name  
Ceylon creeper, Ivy arum



**LIGHT:** Prefers medium indirect light conditions. Avoid exposing to direct sunlight as this can burn the leaves.



**TEMPERATURE:** Thrives in warm conditions between 18-27°C (64-81°F). Growth rate may decrease if the temperature falls below this range. Tolerates temperatures above 12°C (54°F). Protect from cold drafts.



**GROWTH RATE:** Leaf sawing is possible when the plant reaches 2-3 years of age. However, it is not until the plant is really mature (about 3-4 years old) that it begins to appear.



**SOIL:** The plant prefers humid conditions, so choose a soil type with good moisture retention and drainage (peat-based soil, organic compost mix, etc.) for optimal growth.



**NUTRITION:** The devil's ivy thrive in a medium rich in Magnesium. Regularly fertilize with balanced N-P-K (Nitrogen-Phosphorus-Potassium) components on a monthly basis.



**WATERING:** Despite preferring humidity, the devil's ivy does not like to be in excessively wet conditions. Water the plant only when the top layer of soil has dried out, usually every 3-5 days on average.



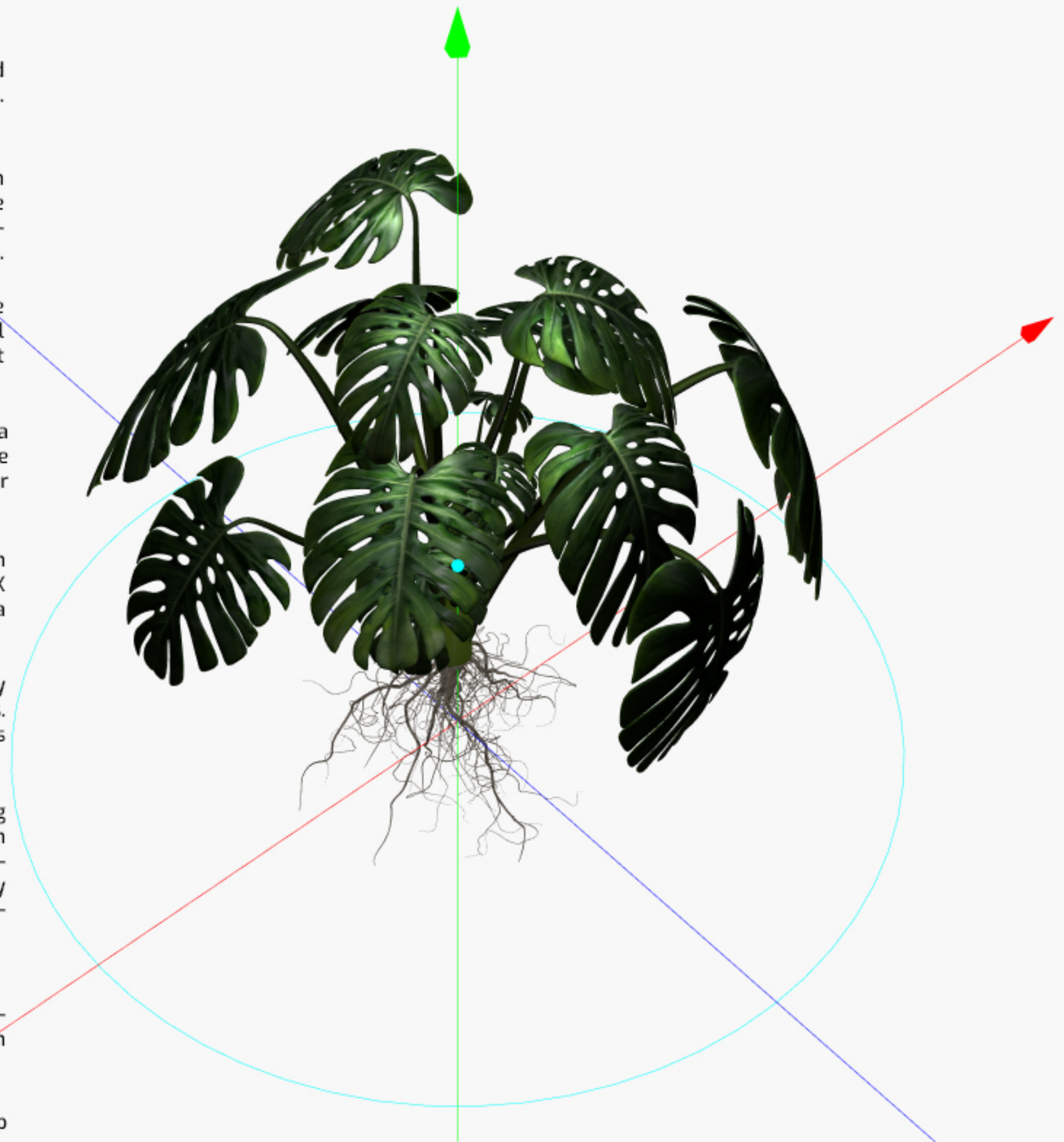
**CARE:** Place the plant near East or South-facing windows, North is also suitable. Be cautious when placing it in a West-facing location as intense afternoon sun can scorch the leaves. In periods of cloudy and rainy weather, supplement natural light with artificial lighting for the plant.



**AIR PURIFYING:** This plant filters airborne toxins such as Formaldehyde, Xylene, and Ammonia, and is part of our clean air plant collection.

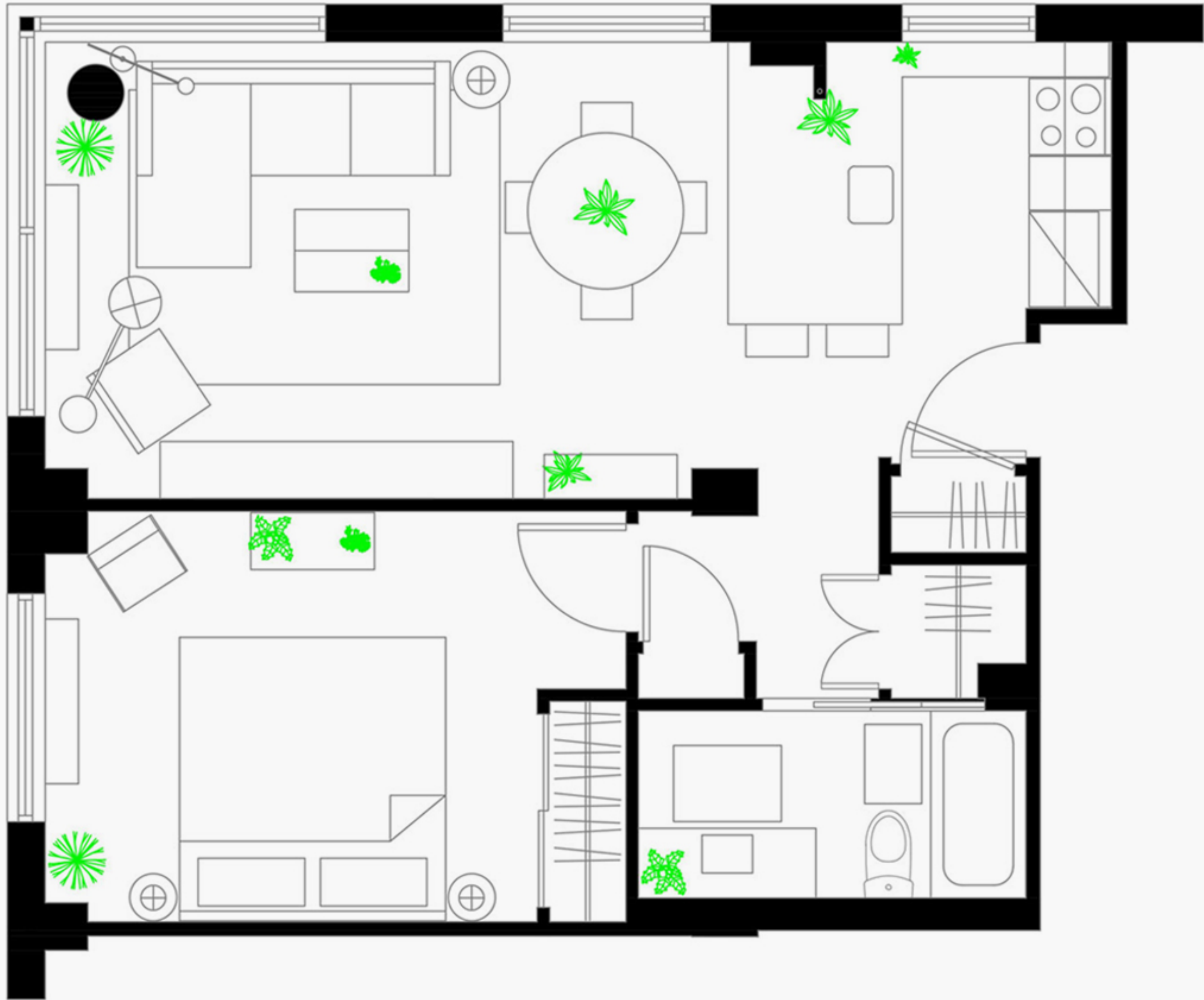


**TOXICITY:** The leaves of the devil's ivy are toxic. Keep away from pets and young children.



# ARRANGE AND PLACE TREES TO HELP THE TREE AS FRESH AS POSSIBLE

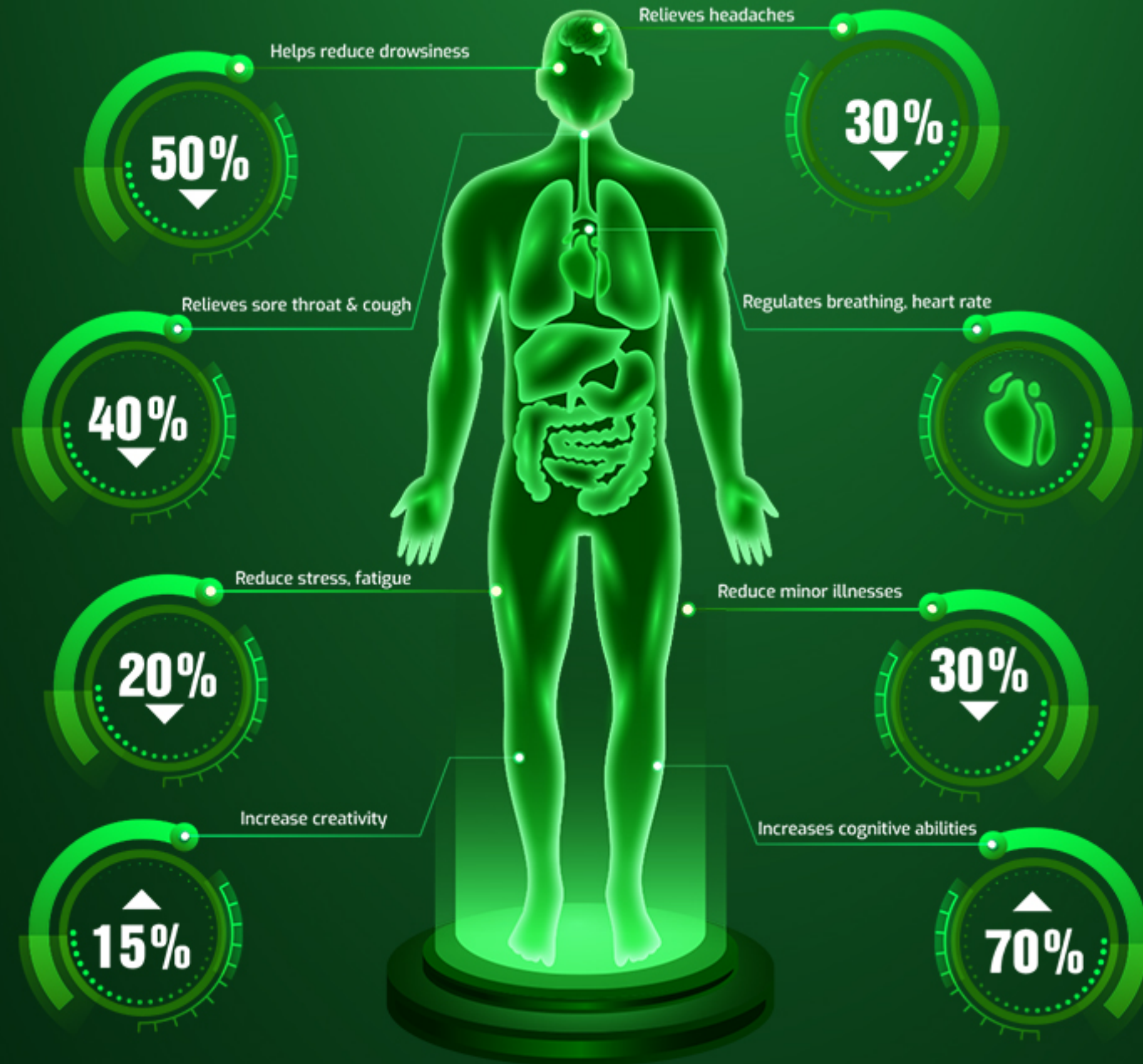




# GREAT BENEFITS OF GROWING INDOOR PLANTS

## HELP IMPROVE HEALTH PROMOTION

The plant has proven itself to help relieve stress, create comfort. People living in a natural environment will help to feel happier.



# AIR PURIFICATION INCREASES QUALITY OF LIFE

Greening the habitat. Helps reduce 50-60% of mold & pathogenic bacteria in the air. Retains moisture, removes harmful contaminants, produces oxygen.



# CONCEPT REFERENCES



# EASIER TREE CARE WITH SMART AUTOMATED CARE SYSTEM

## SMART AUTOTROPHIC POTS

Are self-watering pots worth considering? These pots can help us save effort in tending to our plants, as they don't require daily watering, yet the plants can still thrive. Smart self-watering planters function by providing water and nutrients to the plants through a reverse osmosis mechanism, similar to an underground water network within the pot that keeps the soil moist. Each watering can supply enough water for the plants to last from 7 to 30 days, depending on the plant type and its placement.

**The smart self-watering pots typically consist of four main components:**

1. Water reservoir (tray), this is also usually the outermost layer of pot that both acts as a water storage tray and is the overall structure and external appearance of the pot
2. Inner pot: This tray is placed in and above the water tray, without direct contact with the water tray. The Inner pot usually has multiple outlet holes and is connected to the water tray through the suction wick.
3. Wicking system: This component is quite crucial as it acts as a conduit for drawing moisture from the water reservoir to supply water to the media tray.
4. Water level indicator system: can be a buoy, or a transparent indicator line.



**MULTI-MATERIAL EXTERNAL POTS**



**INNER POT LAYER**



**AUTOTROPHIC SYSTEM**

# THE PRINCIPLE OF OPERATION OF SELF-WATERING POTS: CAPILLARY MECHANISM

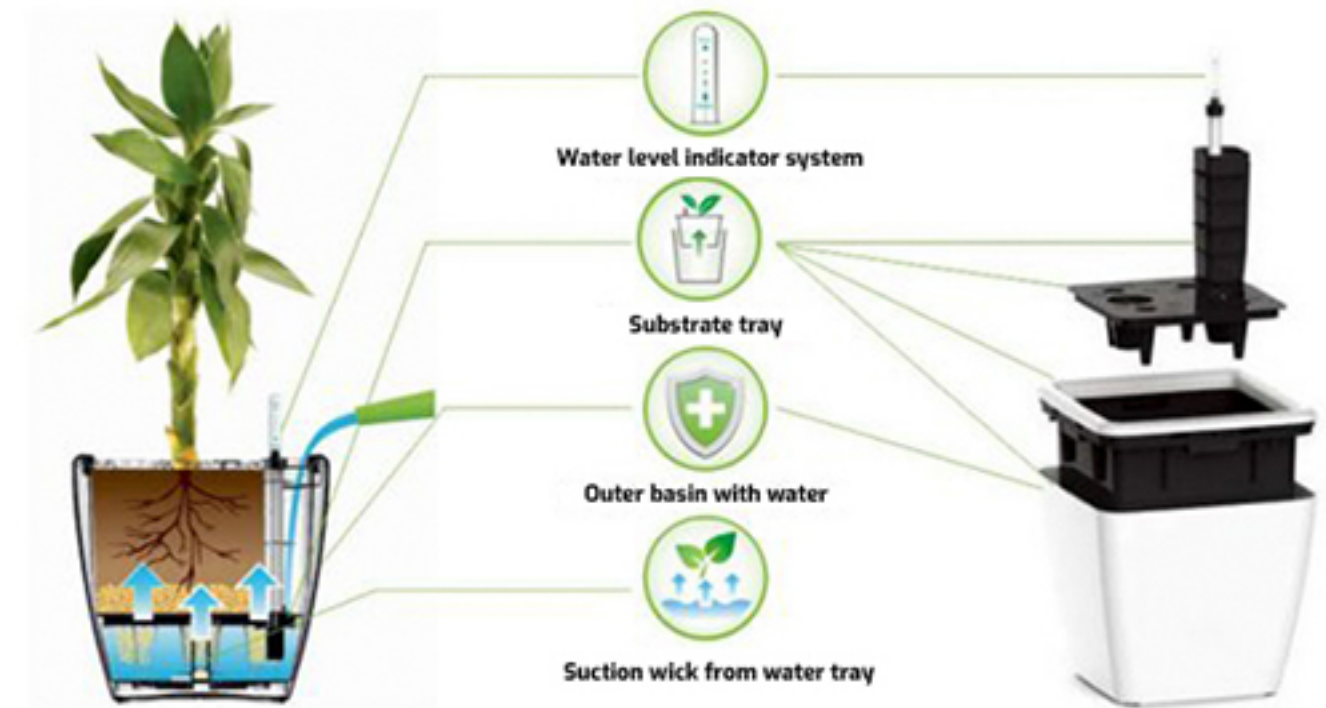
The mechanism behind how self-watering pots work is a phenomenon known as "capillary activity" or "wicking phenomenon."

Capillaries in self-watering pots are usually wick threads made from fabrics that are highly absorbent and durable. One end of the suction wick is submerged in water; The upper end is placed in the middle of the layer of planting soil.

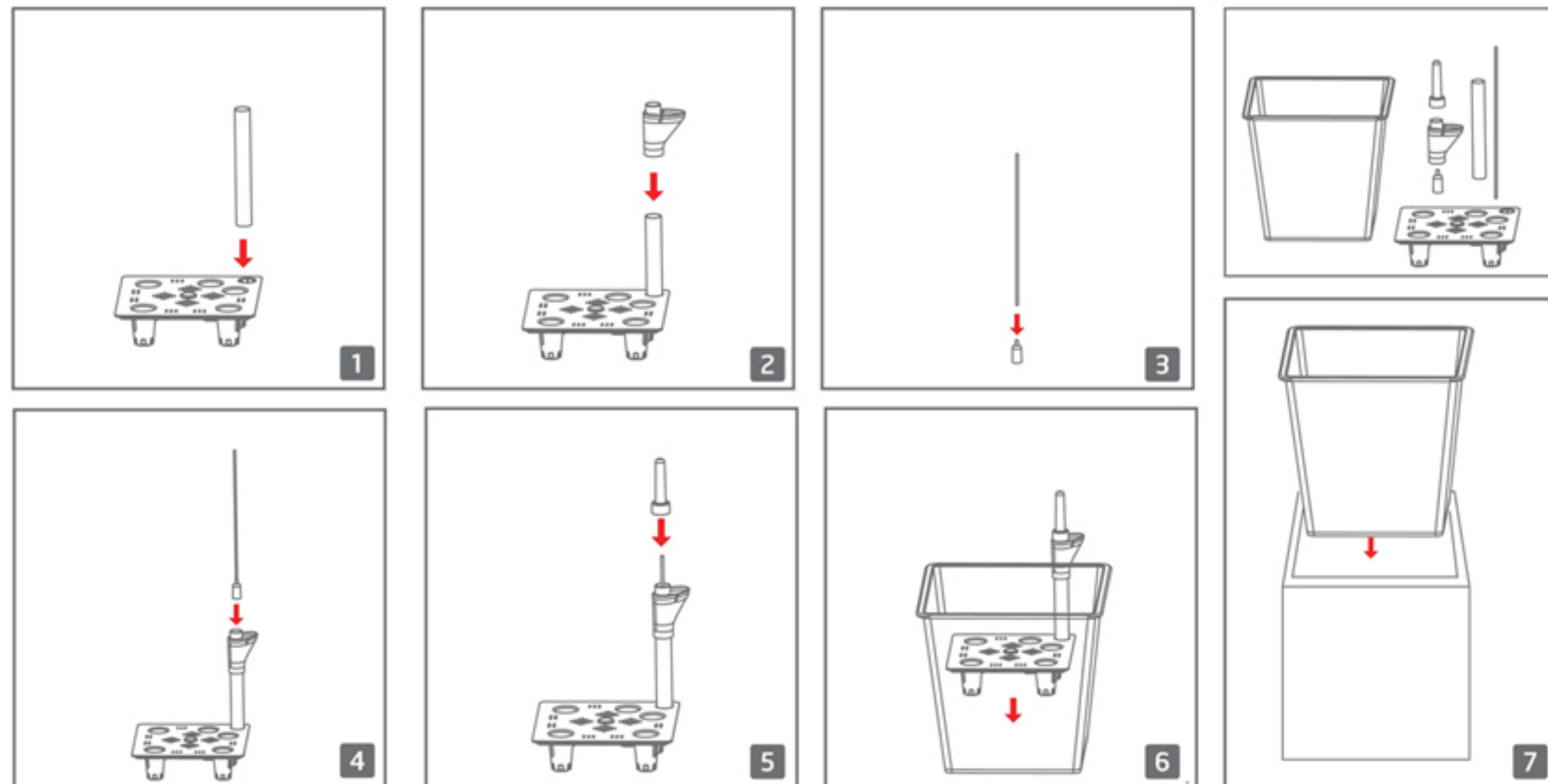
When plants have a need for water, they will absorb water in the soil, when this soil moisture will decrease. And at that moment, the wick will suck a corresponding amount of water to balance the moisture for the tray containing the substrate.

**Note when planting new or replacing the soil for self-irrigating pots:**

You need to water the substrate layer immediately after planting. Or






## STEPS TO INSTALL A PLANT AUTOTROPHIC SYSTEM



## SEE MORE POT MODELS






**STONE - D01/D**

Color:     
Series: D01-D  
Model: STONE






**PORCELAIN - S01/XL**

Color:     
Series: S01/XL  
Model: PORCELAIN





**STONE - D02/X**

Color:     
Series: D02/X  
Model: STONE





**CEMENT - XM1**

Color:    
Series: XM1  
Model: CEMENT





**CEMENT - XM2**

Color:    
Series: XM2  
Model: CEMENT





**CEMENT - XM3**

Color:    
Series: XM2  
Model: CEMENT



**COMPOSITE - C01/XM**

Color:    
Series: C01/XM  
Model: COMPOSITE

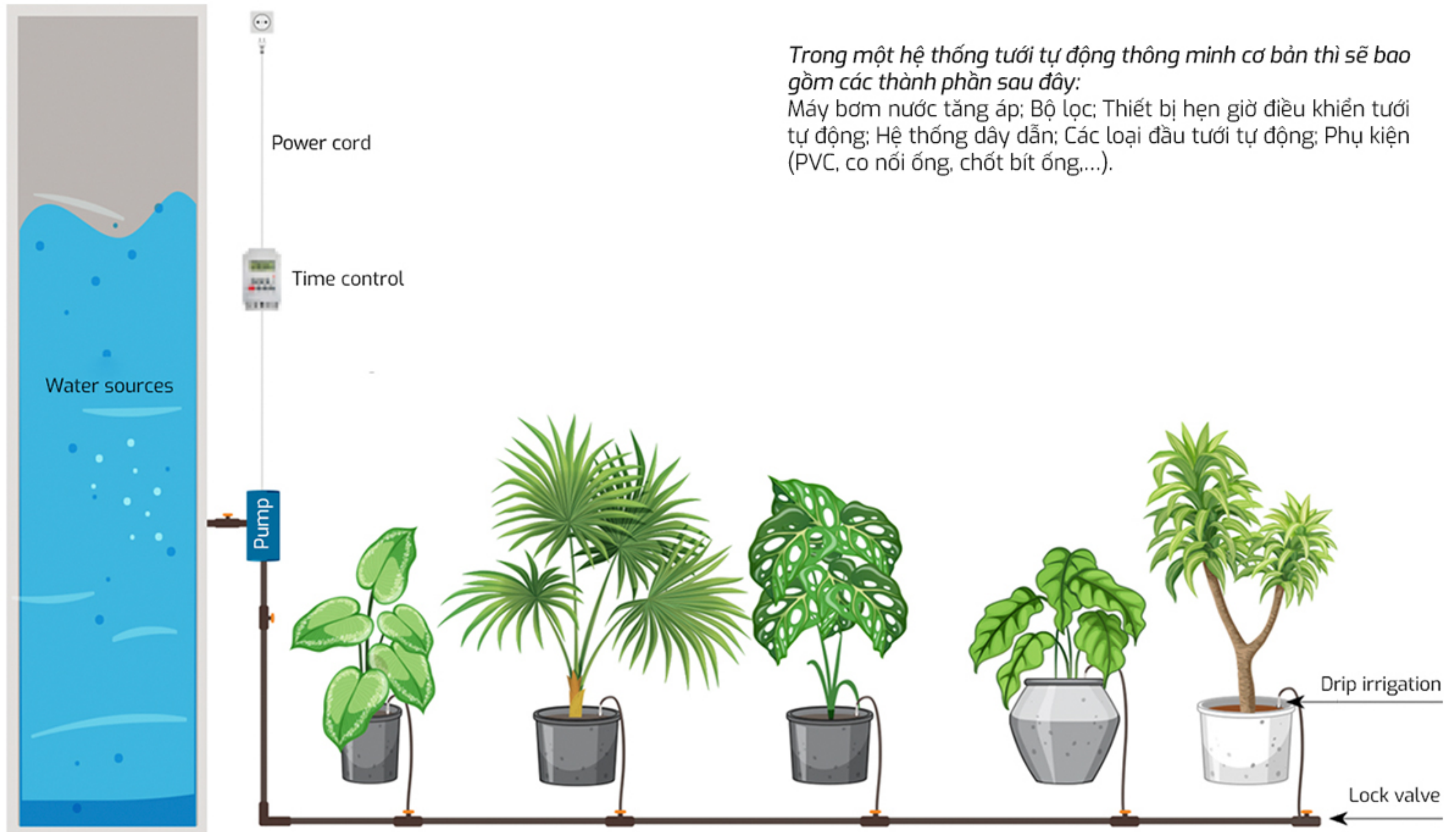


**CERAMIC - G01/M**

Color:    
Series: G01/M  
Model: CERAMIC

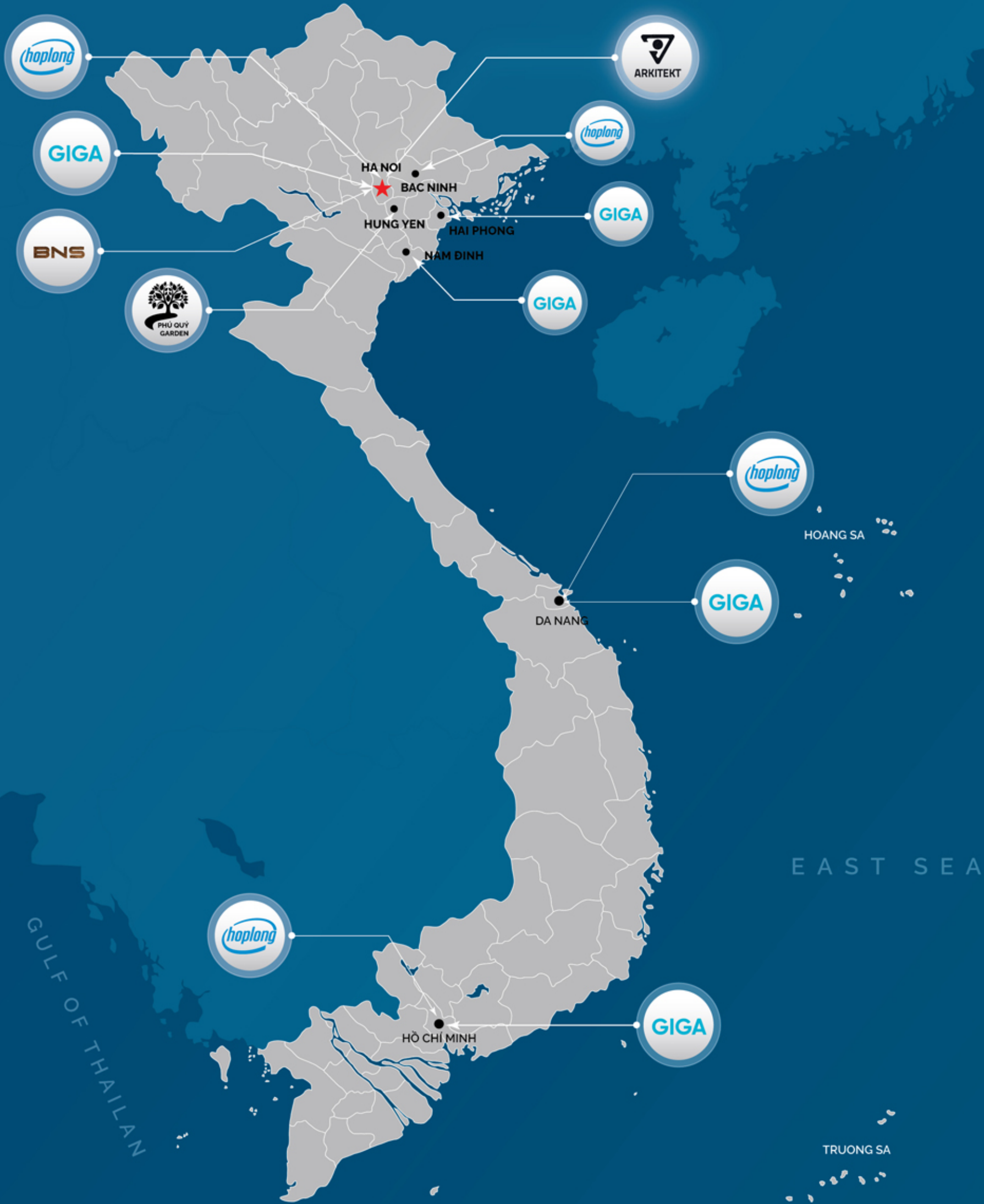
## SMART PLANT IRRIGATION SYSTEM

Smart Irrigation System is a system of irrigation equipment capable of automatically On/Off to water the garden at the right time and water flow that you want. This system will help you save up to 80% of your watering time compared to traditional watering methods.



*Trong một hệ thống tưới tự động thông minh cơ bản thì sẽ bao gồm các thành phần sau đây:*

*Máy bơm nước tăng áp; Bộ lọc; Thiết bị hẹn giờ điều khiển tưới tự động; Hệ thống dây dẫn; Các loại đầu tưới tự động; Phụ kiện (PVC, co nối ống, chốt bít ống,...).*



33A/41 Thai Ha, Ha Noi  
 NT06-198 VOP Gia Lam, Ha Noi  
 033. 266. 6061  
 aki2you  
 @aki2you  
 @aki2you



ARKITEKT.VN